

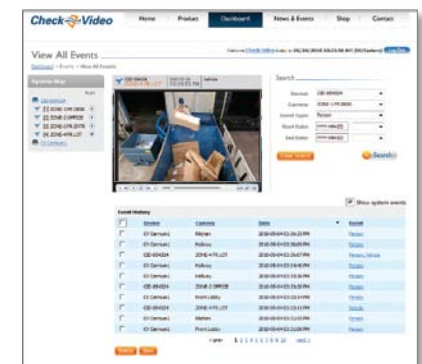
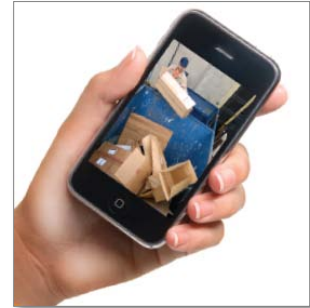


Introduction to CheckVideo

October 2011

About CheckVideo

- Game-changing solution for real-time, automated interactive remote video surveillance and video alarm verification
- Proven, hosted solution that automatically analyzes video in real time and detects the presence of people, vehicles and objects
- Instantly sends color video clips of events of interest to monitoring service, smartphones, PCs and tablets
- Reduces false alarms and solves real security and operational problems
- Fraction of the cost of other video analytics-enabled monitoring products, offering an unsurpassed value proposition



CheckVideo value proposition

- ✓ Helps stop crimes in progress by providing real-time, relevant information about a real incident to Security, Loss Prevention or Police
- ✓ “Watches” every camera, 24/7, for a fraction of the personnel cost
- ✓ Reduces false alarms, saving money and shortening response times
- ✓ Allows for monitoring virtually anywhere; works with existing analog cameras, DVRs and alarm panels and connects to a monitored service
- ✓ Doesn't require additional capital investment in software or servers on site
- ✓ Provides valuable information to improve business operations/service...for example... *“there are xx people browsing your car lot after you close”*



CheckVideo works where other video surveillance solutions fall short

Situation

Problem

CheckVideo Solution

Remote areas with access to key facilities



- Live guards can be cost-prohibitive and cannot provide 100% continuous coverage
- Access control + traditional camera/DVR combinations require continuous monitoring or are useful only on a forensic basis

With CheckVideo:
Know when a vehicle enters the area, after hours, eliminating the need for live guards or continuous monitoring

Loading docks, inventory holding areas and order fulfillment facilities



- Busy areas used for deliveries and employee access can trigger unnecessary alarms
- Motion-based systems alert on all motion, requiring personnel to review multiple alerts instead of focusing only on relevant video

With CheckVideo:
Focus only on a person or vehicle that is loitering and not just passing through, so you know when you receive a delivery

Specific areas inside buildings that can't easily accommodate doors or sensors



- Sensors or other access control/barrier systems are not always feasible inside buildings

With CheckVideo:
Know when a person enters a secure area without permission

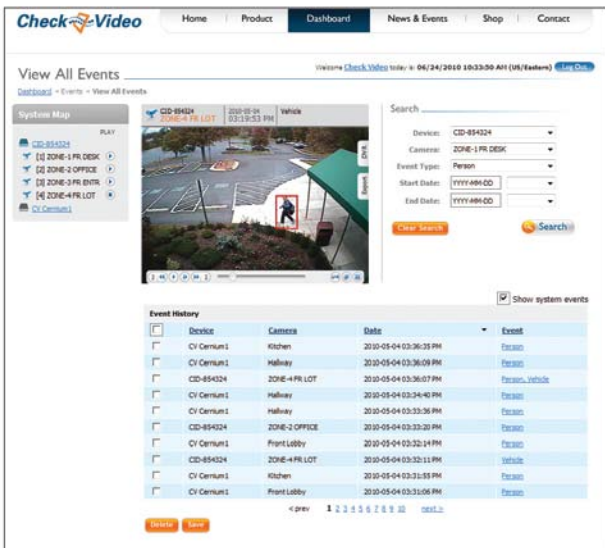
CheckVideo applications are virtually unlimited

- **Businesses with outdoor assets**
 - Automobile dealerships
 - Lawn and garden centers
 - Equipment rental companies
 - Construction sites
 - Utilities
- **Schools that require protection from loitering, vandalism and theft**
 - Playgrounds, entrances
 - Parking lots, bus fleets
- **Retail organizations with large on-site inventory holding areas, rear loading docks, limited access areas**
- **Legal offices, bail bond offices, or other professional service areas containing large amounts of cash or sensitive information**
- **Indoor protection leveraging current cameras – file rooms, entry and exit areas, smoking areas, etc.**



CheckVideo allows for monitoring in nearly any indoor, outdoor or remote location

- Software as a Service (SaaS)
 - Central station integration or self-monitoring
- Three hardware options



CheckVideo Software Service (CVSS)



CheckVideo Gateway for Broadband Networks (CV400)



CheckVideo Gateway for Cellular Networks (CV43G)



CheckVideo IP Camera (CV120)

CheckVideo is a cost-efficient alternative or enhancement to existing security systems



Converts CCTV Systems into Proactive, Real-Time Solutions

- Plugs into existing analog cameras
- 'Watches' all the video, 24/7, and instantly pushes alarm video when triggers occur
- Converts passive CCTV video into actionable, visual information
- Eliminates the need to continuously stream video and consume costly bandwidth and IT infrastructure



Eliminates the Need for Motion Sensors

- Adds intelligence to the video so alarms are triggered by the presence of people or vehicles instead of random motion
- Ignores random motion or native motion (e.g., rain) that sensors always trigger
- Minimizes nuisance alarms and subsequent distraction/work effort required to investigate alarms



Improves the Effectiveness of Access Control Systems

- Provides instant visual verification of unauthorized access
- Can also send video at the presence of an individual whether or not s/he utilizes entry key or code



Makes In-House Security Forces More Effective

- Directs alarm video to specific locations or people
- Untethers security personnel from video banks so they can assume additional duties
- Instantly informs on-site security forces of situations requiring immediate attention



Ensures More Cost-Efficient Professional Monitoring Services

- Seamlessly directs alarm video to monitoring center
- Reduces alarm activations
- Lowers overall monthly service cost compared to motion-based systems

CheckVideo delivers results and impacts the bottom line

CheckVideo Case Study

After Only One Month of Monitoring...

Customer: Car Dealership

Location: Florida

Problem: Car theft and vandalism have been plaguing the dealership for years

Solution: Install CheckVideo to monitor surface lots after hours

Results: Suspicious person detected in lot at 3am. Police dispatched to scene before any cars stolen or damaged. Dealership is ordering 20 more units.



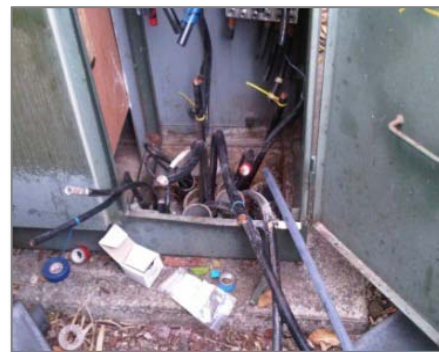
A vehicle pulls up to the back door after closing

Save money by stopping and deterring "inside" theft



"Someone is using our dumpster"

Save \$300+ per month by avoiding additional dumpsters



Rental property off market for 120 days

Save thousands by avoiding copper theft damage and liability